

Miss Tanya's summer program is divided into six sessions. Each session is theme oriented and will include open ended art activities, music and lots of outdoor play.

Days & Times:

SS #1 First week: 3 or 5 Day Option
Second week: 3 or 4 Day Option
(Juneteenth week)

9-12

9-1 (bring a lunch)

9-3 (bring a lunch and a rest towel)

SS #2 First week: 3 or 5 Day Option
Second week: 3 or 4 Day Option
(4th of July week)

9-12

9-1 (bring a lunch)

9-3 (bring a lunch and rest towel)

SS # 3,4,5 (2 weeks)
3 or 5 Day Option
9-12

9-1 (bring a lunch)

9-3 (bring a lunch and rest towel)

SS #6 (One week only)
3 or 5 Day Option
9-12

9-1 (bring a lunch)

9-3 (bring a lunch and rest towel)



S.S. #1

June 9-June 20 *Closed June 19th*

Pond Life

What lives in our vernal pond?



S.S. #2

June 23-July 3 *Closed July 4th*

ARTrageous!

Creativity comes alive!

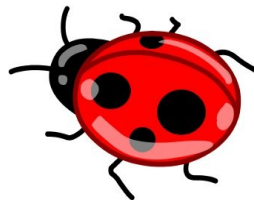


S.S. #3

July 7-July 18

Ooey Gooley Fun

Let's get messy and have a lot of fun!



S.S. #4

July 21-August 1

Going Buggy

Let's learn all about bugs!



S.S. #5

August 4-August 15

Messy Science

We'll color, pour, freeze, spray and of course get wet!



S.S. #6

August 18-August 22

Under the Sea

Let's learn about our friends in the deep blue sea!

For information please call:

Miss Dustie 508-366-7907

Session 1 (two weeks) – no camp June 19th

Week 1: 3 or 5 day option

3 day 9-12 \$117, 9-1 \$156, 9-3 \$234

5 day 9-12 \$195, 9-1 \$260, 9-3 \$312

Week 2: 3 or 4 day option- no camp 6/19

3 day 9-12 \$117, 9-1 \$156, 9-3 \$234

4 day 9-12 \$156, 9-1 \$208, 9-3 \$312

Session 2 (two weeks) - no camp July 4th

Week 1: 3 or 5 day

3 day 9-12 \$117, 9-1 \$156, 9-3 \$234

5 day 9-12 \$195, 9-1 \$260, 9-3 \$390

Week 2: 3 or 4 day-no camp 7/4

3 day 9-12 \$117, 9-1 \$156, 9-3 \$234

4 day 9-12 \$156, 9-1 \$208, 9-3 \$312

Sessions 3, 4, 5 (two weeks)

3 day 9-12 \$234, 9-1 \$312, 9-3 \$468

5 day 9-12 \$390, 9-1 \$520, 9-3 \$780

Session 6 (one week only)

3 day 9-12 \$117, 9-1 \$156, 9-3 \$234

5 day 9-12 \$195, 9-1 \$260, 9-3 \$390

10% off if attending all sessions!

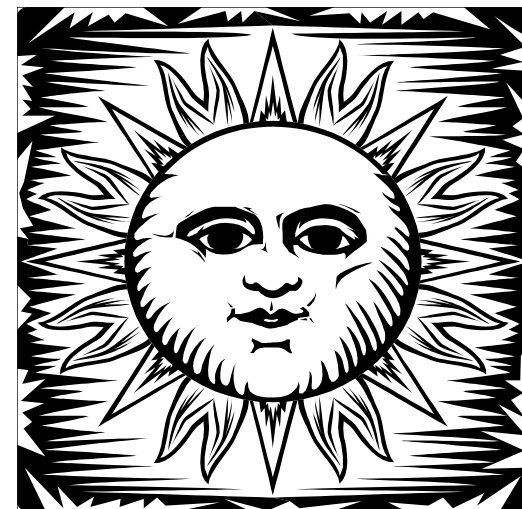
A one week session may be an option, please call for availability

Non-refundable tuition due upon registration. For new students, a completed registration packet including physical and recent photo must be sent by June 1st. Children with out this information will be unable to attend summer camp.

Miss Tanya's Longmeadow School
P.O. Box 1538
Westborough, MA 01581

MISS TANYA'S LONGMEADOW SCHOOL

SUMMER Program



2025



Please complete the following and return
with your tuition to
Longmeadow! Thank you!

Name of parent:

Name of child:

Address:

Telephone:

Birth date:

Desired Sessions:

S.S.# 1 6/9 -6/20 _____

S.S.# 2 6/23-7/3 _____

S.S.# 3 7/7-7/18 _____

S.S.# 4 7/21-8/1 _____

S.S.# 5 8/4-8/15 _____

S.S. # 6 8/18-8/22 _____

3 day option _____

5 day option _____

4/5 Year old _____ 3 year old _____

3 hour _____ 4 hour _____
6 hour _____

Please complete the following and return
with your tuition to
Longmeadow! Thank you!

Name of parent:

Name of child:

Address:

Telephone:

Birth date:

Desired Sessions:

S.S.# 1 6/9 -6/20 _____

S.S.# 2 6/23-7/3 _____

S.S.# 3 7/7-7/18 _____

S.S.# 4 7/21-8/1 _____

S.S.# 5 8/4-8/15 _____

S.S. # 6 8/18-8/22 _____

3 day option _____

5 day option _____

4/5 Year old _____ 3 year old _____

3 hour _____ 4 hour _____
6 hour _____

Please complete the following and return
with your tuition to
Longmeadow! Thank you!

Name of parent:

Name of child:

Address:

Telephone:

Birth date:

Desired Sessions:

S.S.# 1 6/9 -6/20 _____

S.S.# 2 6/23-7/3 _____

S.S.# 3 7/7-7/18 _____

S.S.# 4 7/21-8/1 _____

S.S.# 5 8/4-8/15 _____

S.S. # 6 8/18-8/22 _____

3 day option _____

5 day option _____

4/5 Year old _____ 3 year old _____

3 hour _____ 4 hour _____
6 Hour _____